



3 November 2010

The Manager
Company Announcements Office
Australian Securities Exchange

Dear Sir,

MANAGEMENT BRIEFING ON CURRAGH COAL OPERATIONS

Following is a presentation that is to be given today at a management briefing on Wesfarmers' Curragh coal operations.

The briefing will be held today at 3:30 (EST) / 4:30 pm (EDT) / 1:30 pm (WST).


This briefing will be webcast and accessible via our website at www.wesfarmers.com.au.

Yours faithfully,

A handwritten signature in black ink, appearing to be "L J Kenyon".

L J KENYON
COMPANY SECRETARY

enc



Wesfarmers Resources Limited

Curragh Operational Briefing

3 November 2010

Agenda

	Item	Presenter
1	Wesfarmers Resources	Stewart Butel
2	Overview of Curragh Mine	Rod Bridges
3	Export market update	Rob Brenchley
4	Curragh expansion update	Stewart Butel
5	Outlook	Stewart Butel
6	Questions	Stewart Butel

Resources division management team

 Managing Director	Stewart Butel
 Director Marketing & Development	Rob Brenchley
 Chief Financial Officer	Michael Ball
 Executive General Manager Curragh	Rod Bridges
 General Manager Sales & Marketing Curragh	Matt Latimore
 General Manager Business Development	Michael Dixon
 General Manager Human Resources	Grant Harrison
 General Manager Legal Affairs	Bill Ash
 General Manager (Premier Coal)	Patrick Warrand
 General Manager Marketing & Development (Premier Coal)	Bill Moody

Curragh operational & marketing structure

OPERATIONS

Executive
General Manager
Rod Bridges

Operations

Expansion / Support

- Mining
- Maintenance & Asset Management
- Technical Services
- CHPP
- CHPP Expansion Project
- Commercial
- HSE & Training
- Human Resources
- Expansion Delivery

MARKETING

General Manager
Sales & Marketing
Matt Latimore

Marketing & Logistics

- Coal Sales
- Coal Technology
- Shipping
- Marketing Finance Rail & Port
- Coal Quality & Planning

Wesfarmers Resources



Export metallurgical & domestic steaming coal

QLD



Premier Coal

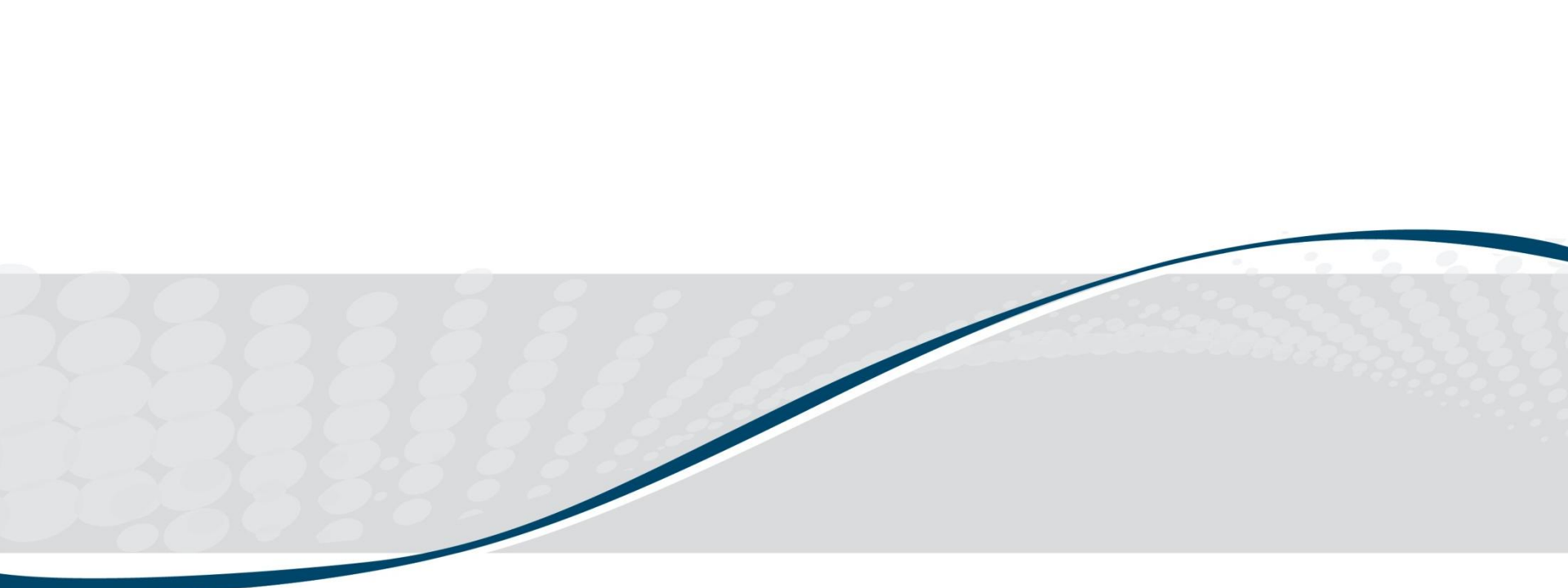
Domestic steaming coal

WA



Export & domestic steaming coal

NSW
(40%
ownership)



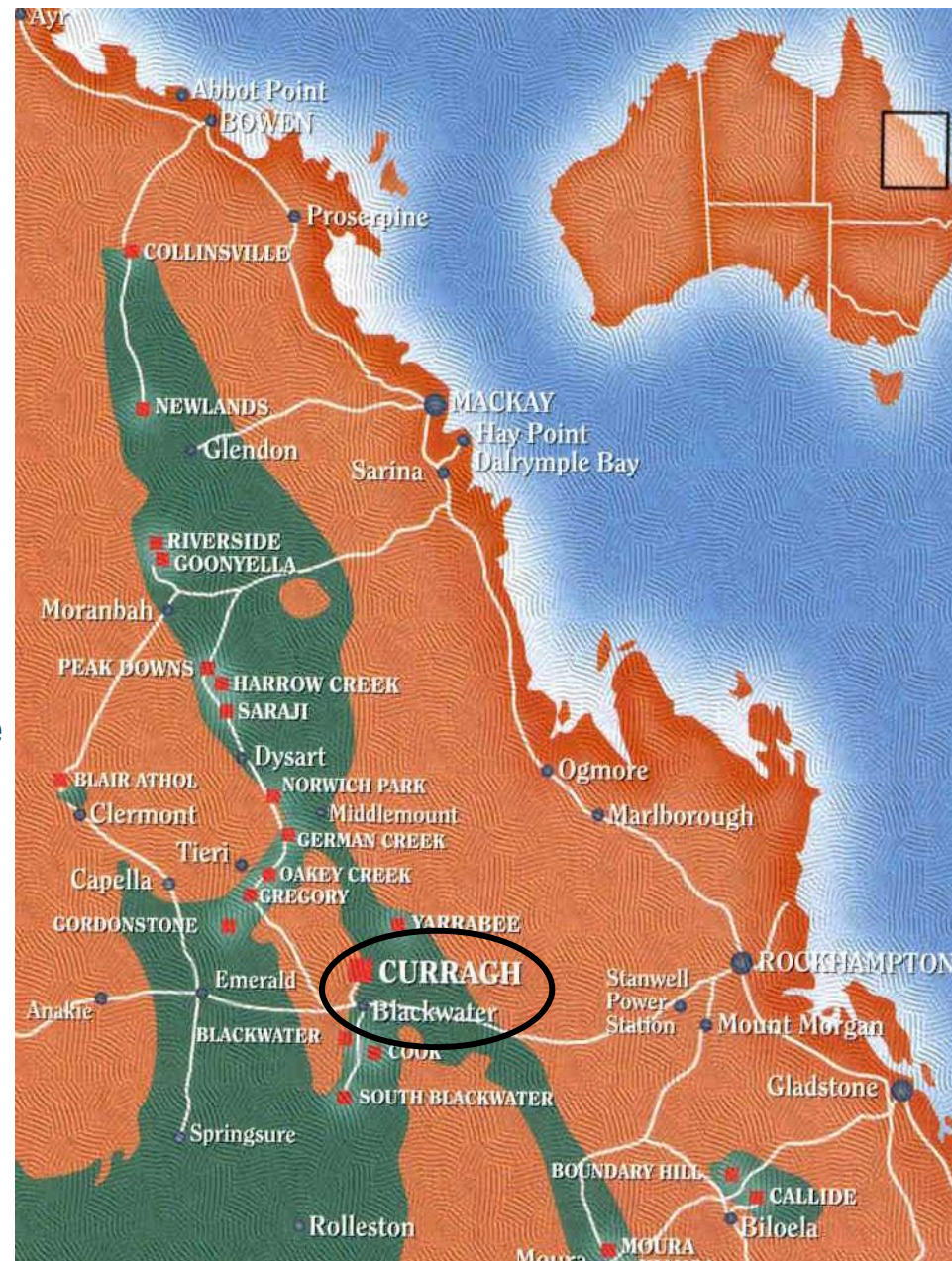
Overview of Curragh Mine
Rod Bridges
Executive General Manager Curragh

Curragh – significant milestones

Mine opened	1983
First export shipments	1984
Wesfarmers purchase of Curragh	June 2000
Curragh East development	2001
Coal preparation plant upgrade	2002 & 2004
Curragh North development	2004 – 2006
Announced Curragh expansion to 8.0 – 8.5mtpa exports	November 2009
Commenced FS to expand Curragh to 10mtpa exports	August 2010

Curragh mine location

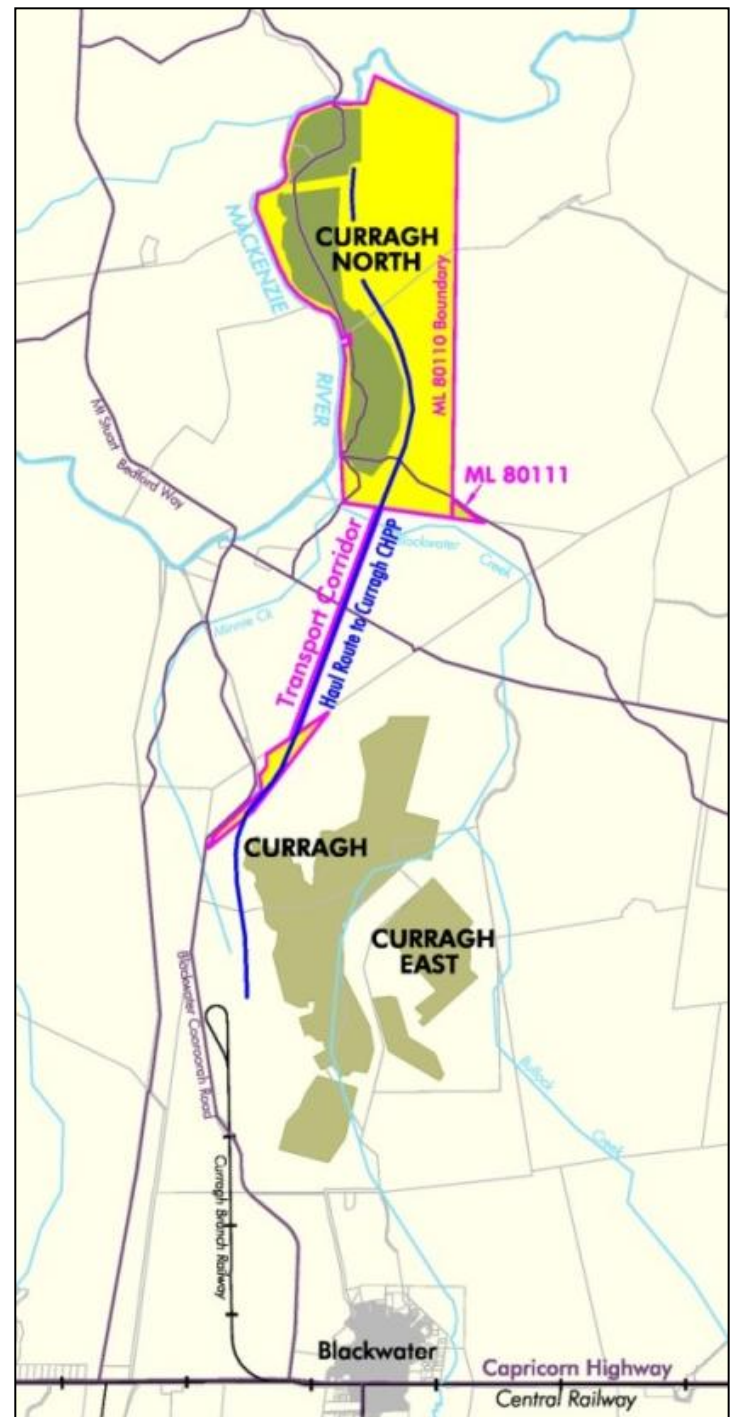
- Located in Central Queensland
 - Heart of the Bowen coal basin
- World prominence
 - Largest metallurgical coal reserve
- Close to major infrastructure
 - Electrified rail
 - 75mtpa port facility
 - Electricity grid
 - Dormitory town
 - Coastal proximity



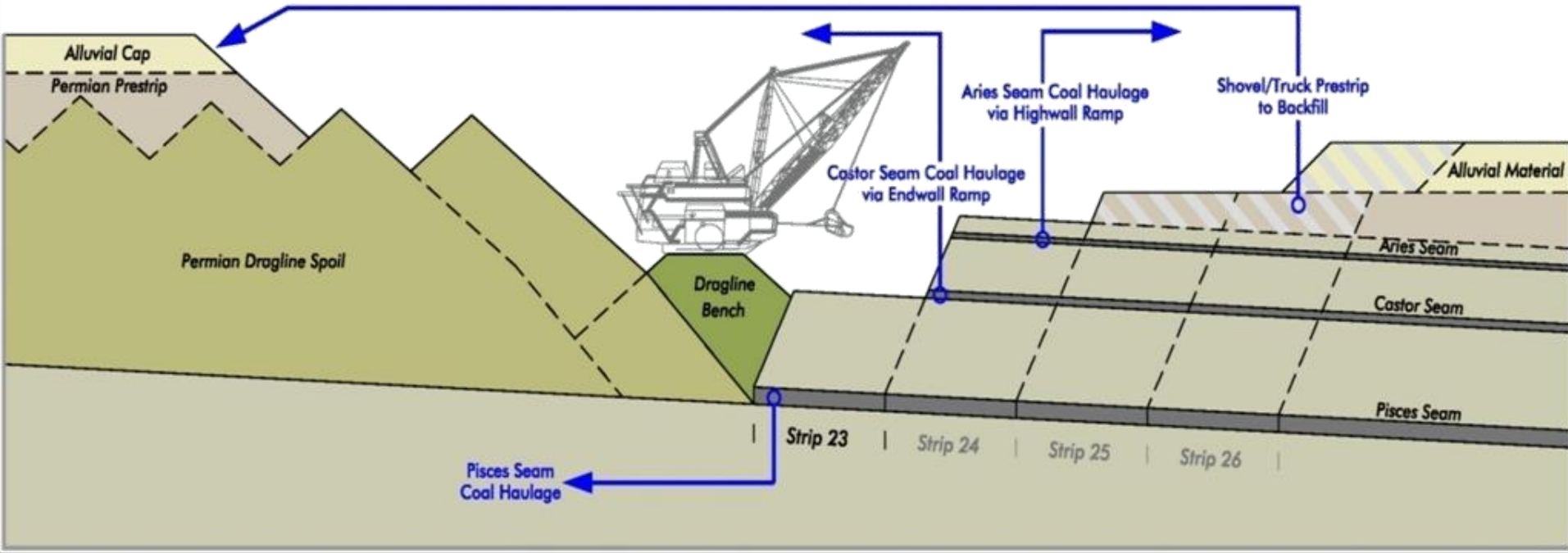
Coal measures indicated in green

Curragh mine

- Open cut mine
- Large draglines & fleet of mobile equipment
- 500 experienced personnel
- 9.0 - 9.5mtpa capacity coal handling & blending facilities
- Multi product mine:
 - Low ash export metallurgical coal – 75%
 - Medium ash domestic steaming coal – 25%



Mining methods



Overburden removal dragline

- Fleet of five draglines
- Largest is a Marion M8750 'Super' Dragline
- 6,500 tonnes, 114 bank cubic metres (bcm) bucket, 30mbcm/pa



Overburden removal truck & shovel

- Pre-strip ahead of dragline fleet
- Combination of contractor & owner operator
- Upgrading fleet to 'ultra class' in mid 2011



Coal mining

- Selective mining
- Coal sourced from:
 - Curragh
 - Curragh East
 - Curragh North



Curragh North ROM

- 21km in length
- Largest single flight conveyer
- 2,500tph capacity



Crushed plant feed stockpiles & overland conveyor ('OLC')

- 2 x 60,000 tonne crushed coal stockpiles
- Ability to direct feed from OLC, Curragh ROM's

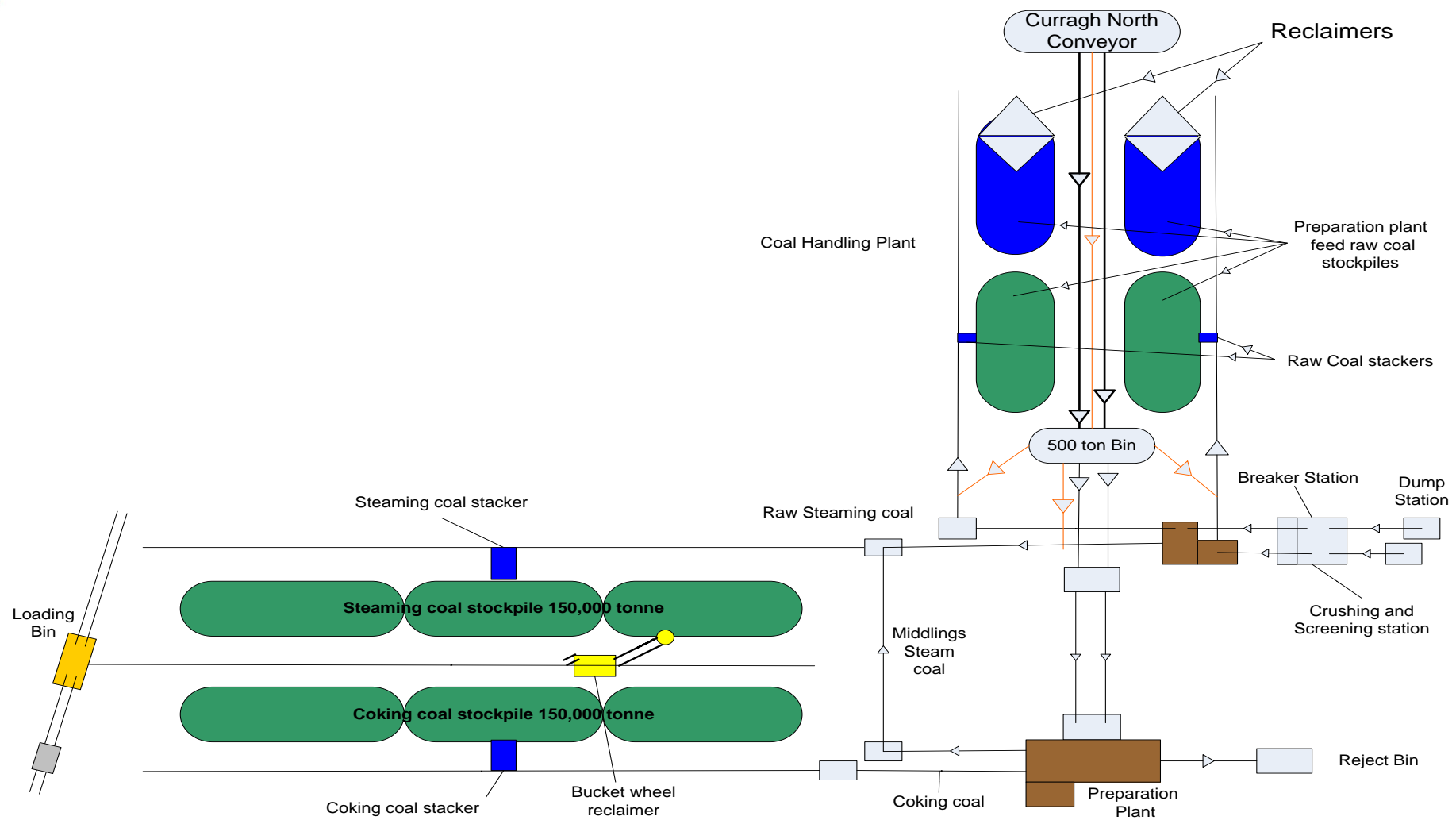


Coal handling & preparation plant

- 1,600tph capacity
- Two stage washing
- Primary circuit – metallurgical coal
- Secondary circuit – steaming coal



Coal Handling Preparation Plant layout



Train loadout

- 7,000 – 8,000 tonnes capacity trains
- 305km to the Port of Gladstone



Port of Gladstone RGCT

- Two export terminals at Gladstone
- RGCT & Barney Point



'RGCT' refers to the R G Tanna Coal Terminal

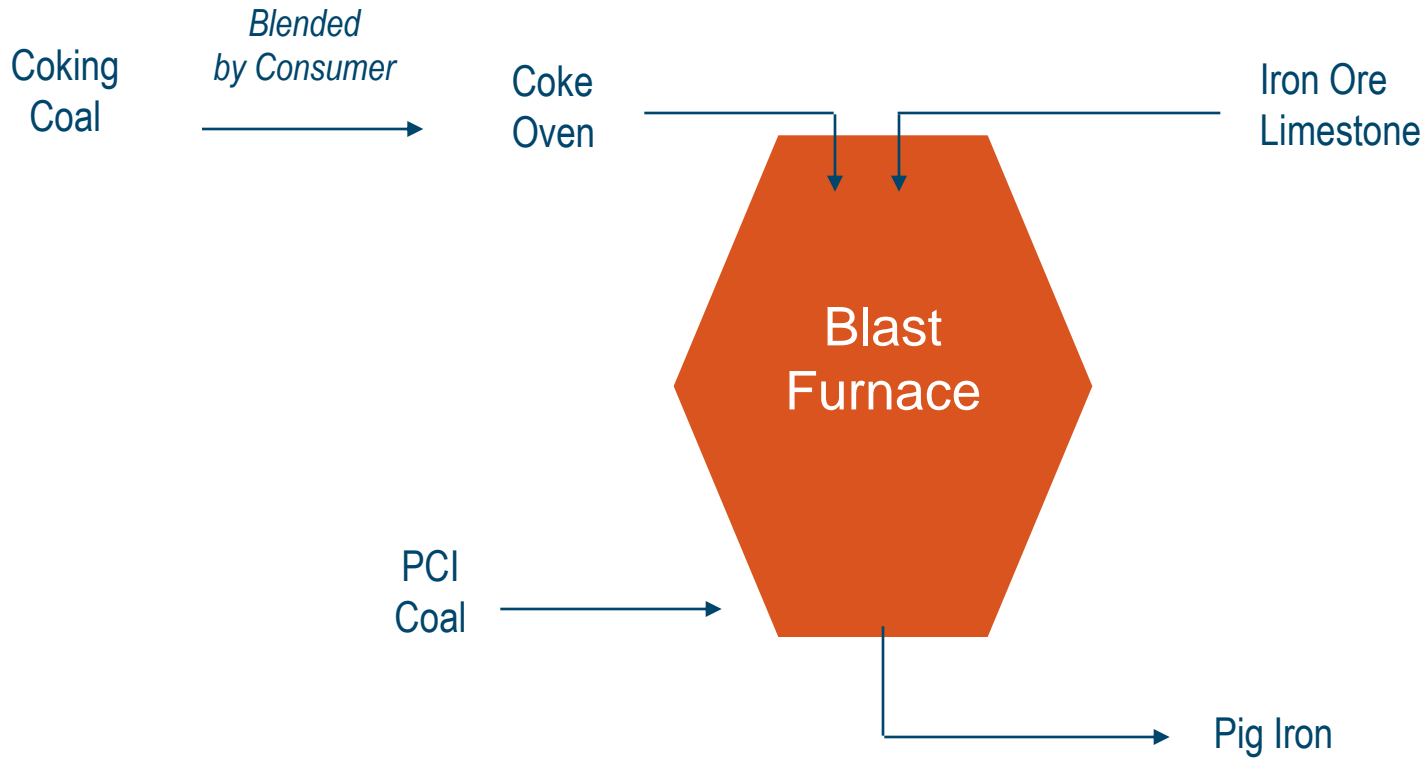


Curragh export market update
Rob Brenchley
Director Marketing & Development

Curragh export market update

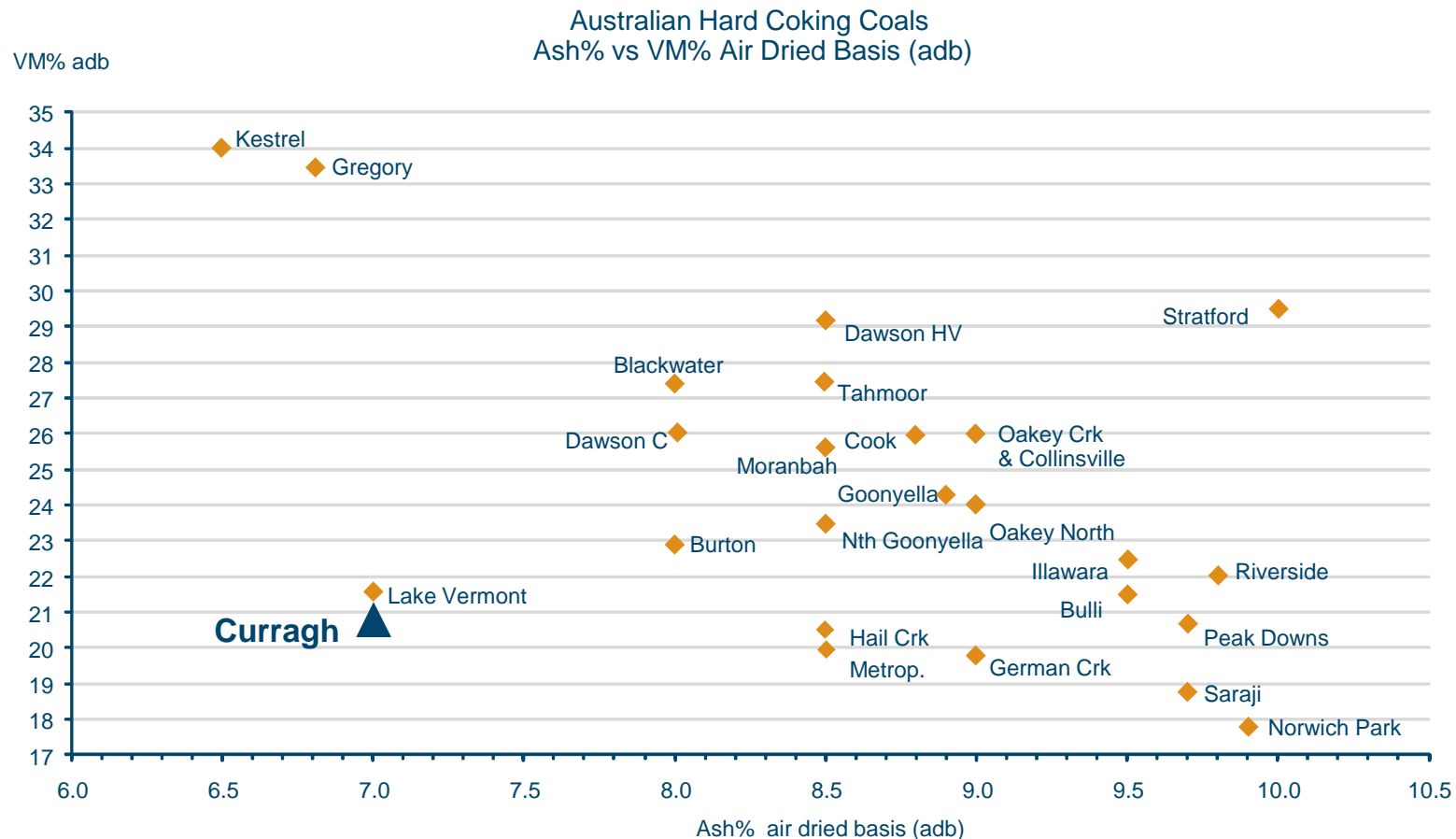
- Established Curragh brand & quality
- Diversified product range
- Positioned as 'independent' supplier
- World leading steel makers as key customers
- Positioned for future growth

Coking coal utilisation

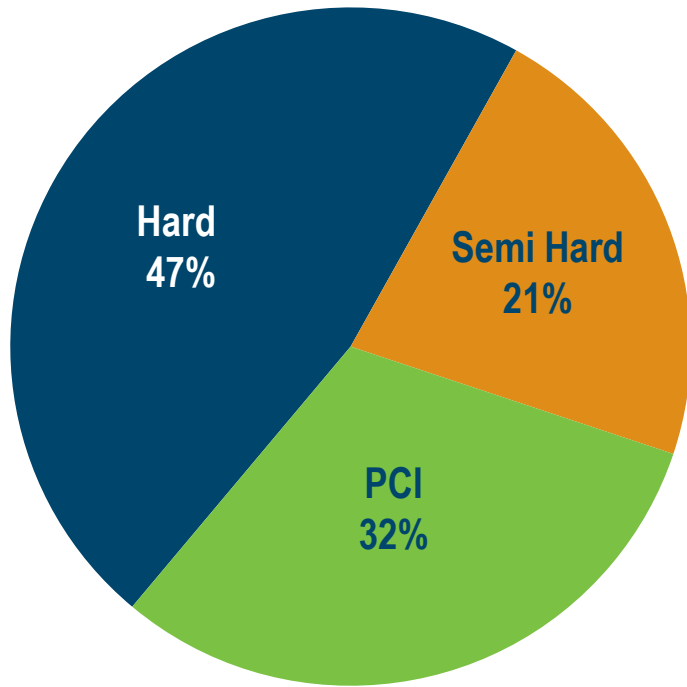


'PCI' means Pulverised Coal Injection

Queensland hard coking coal indicative quality comparison

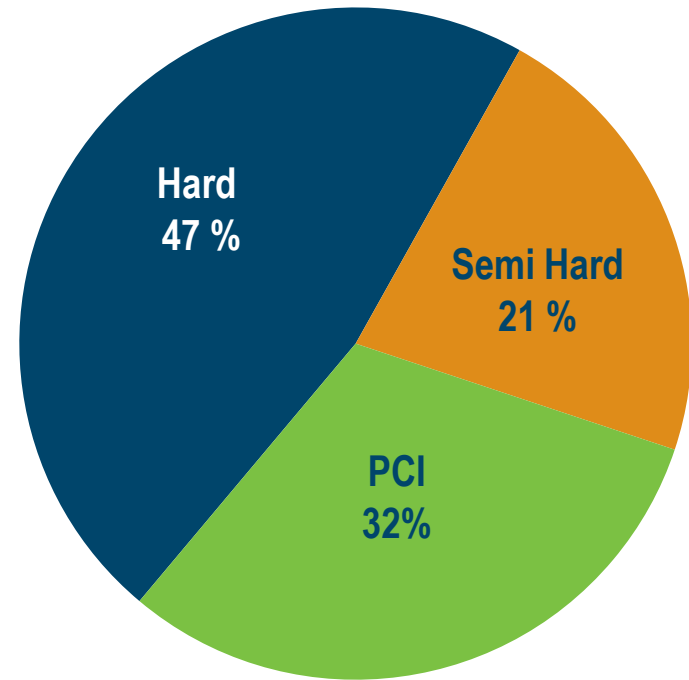


Curragh export metallurgical sales



2009/10 Actual

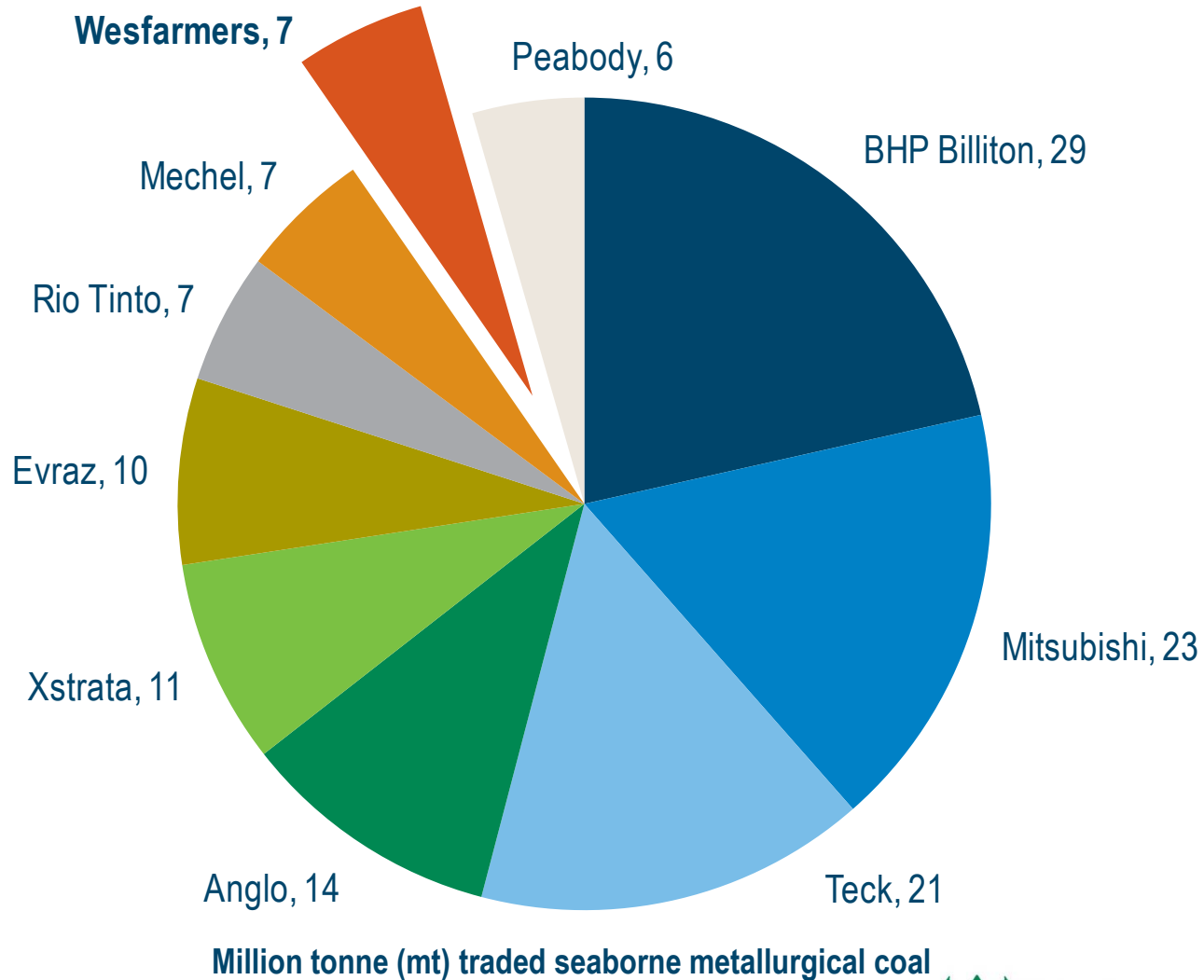
6.6 million tonnes



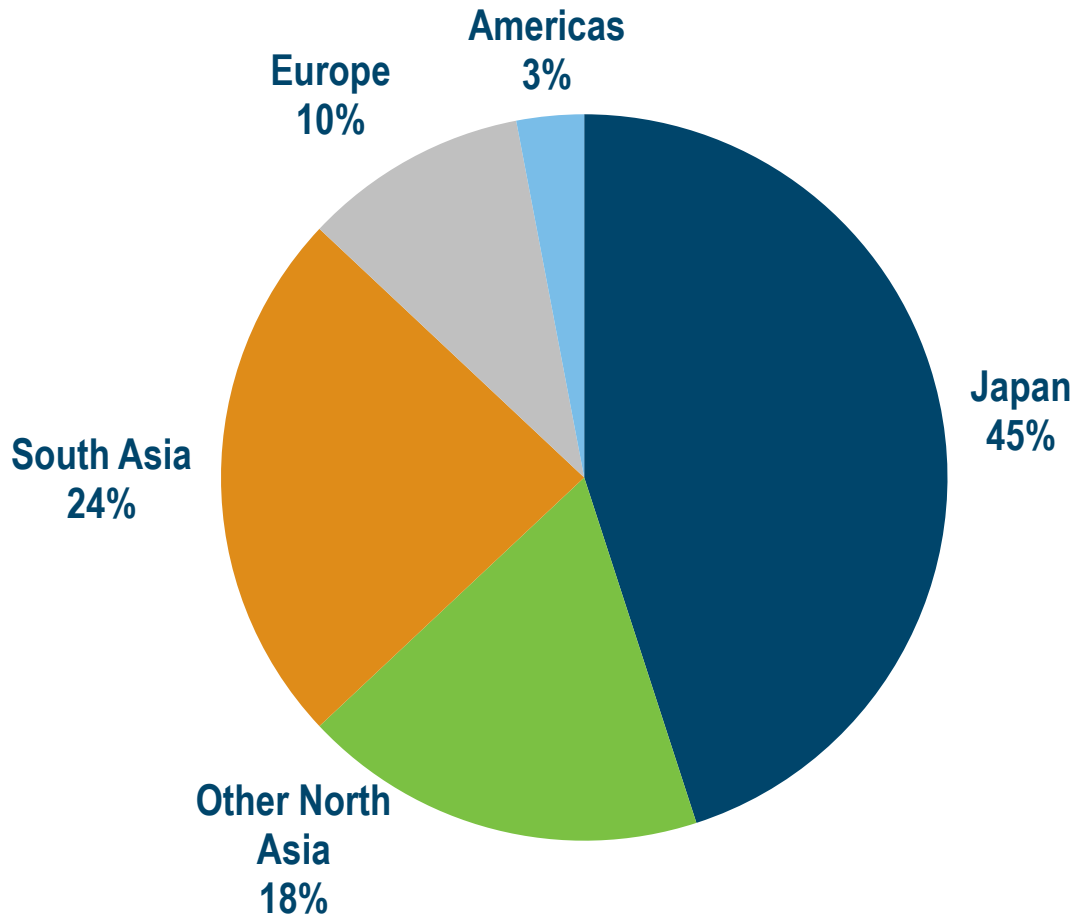
2010/11 Forecast

6.2 – 6.7 million tonnes

Curragh medium sized metallurgical coal player



Curragh metallurgical customer mix 2010

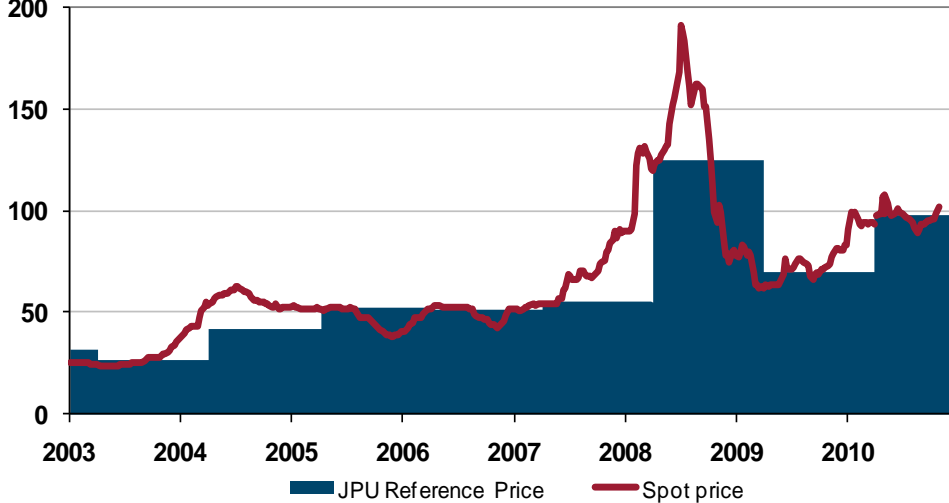


Queensland Japan Chamber of
Commerce & Industry
Export Excellence Awards - Winner

Australian coal market prices

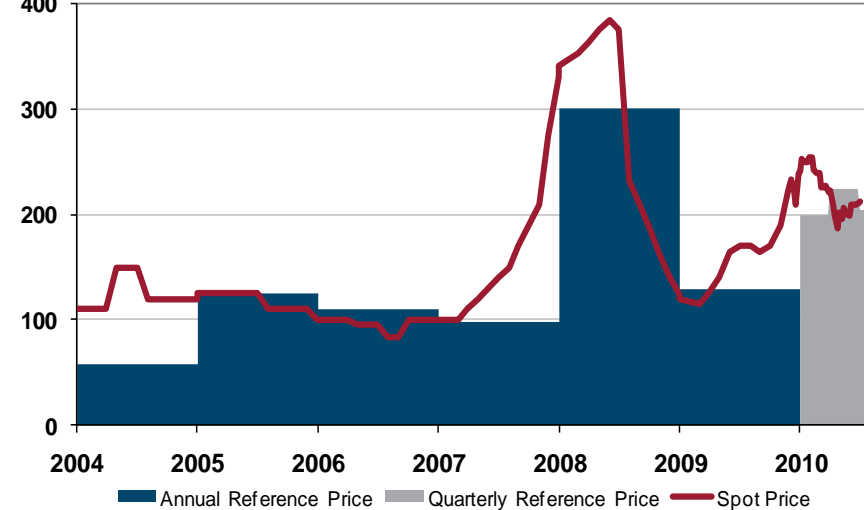
Australian steaming coal prices

US\$/Tonne (Nominal) FOB Australia (annual verse spot)

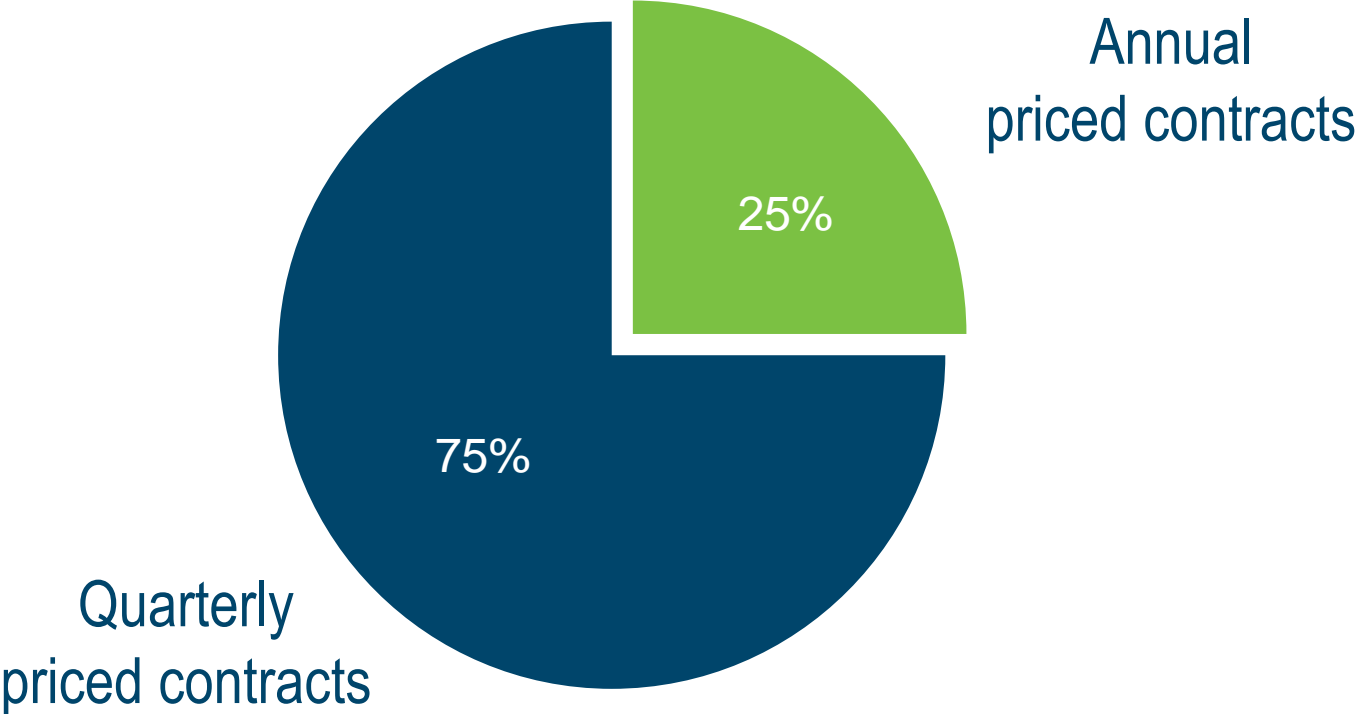


Australian hard coking coal prices

US\$/Tonne (Nominal) FOB Australia (annual verse spot)

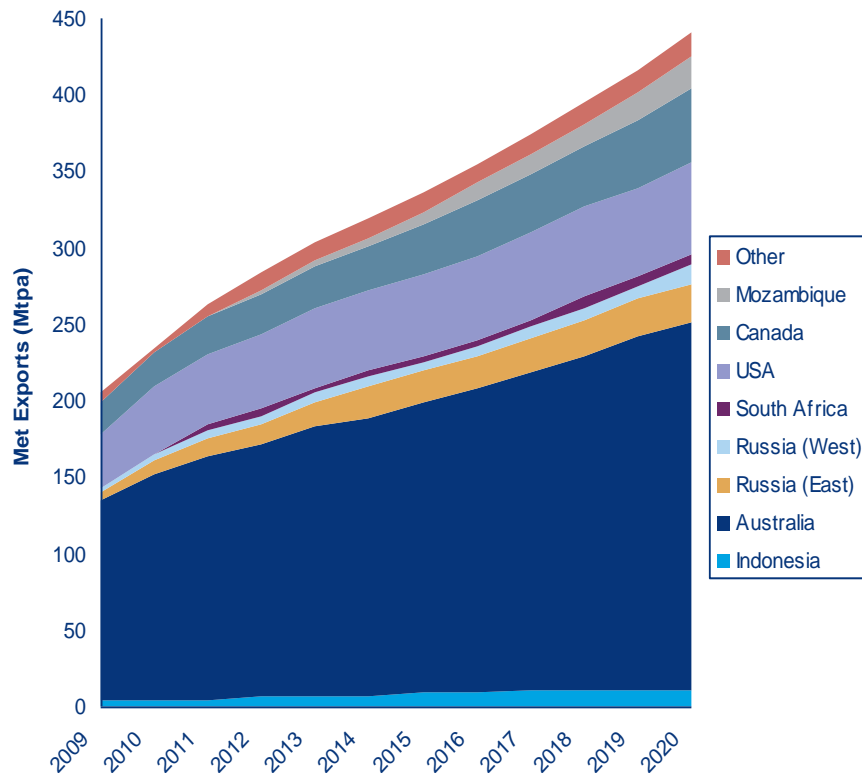


Curragh export sales pricing

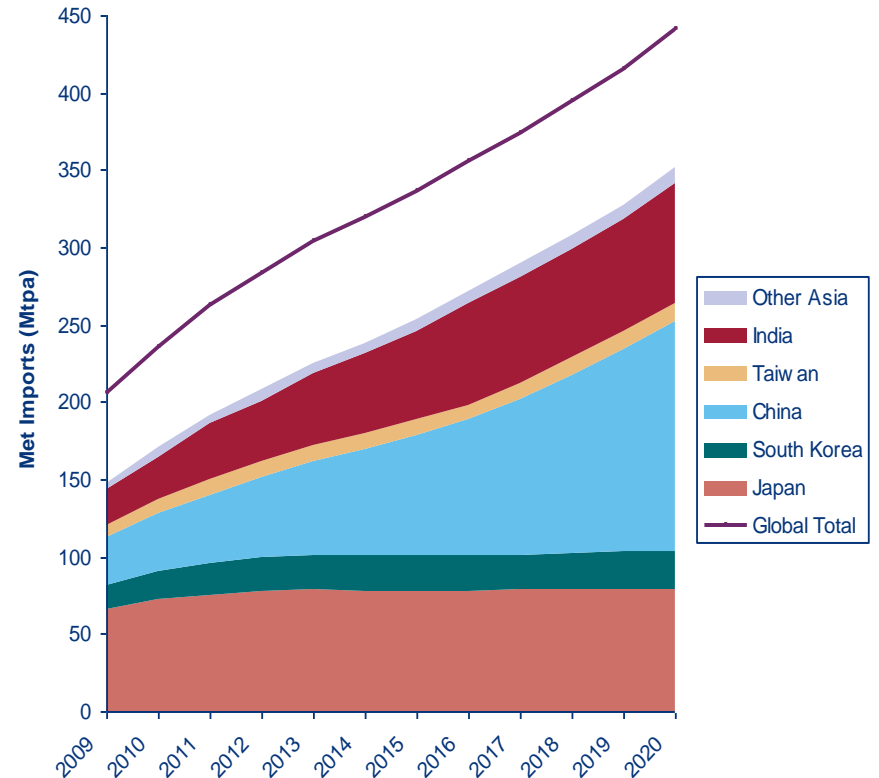


Metallurgical demand growth will largely stem from Asia.
Australia will continue to be the main export supplier.

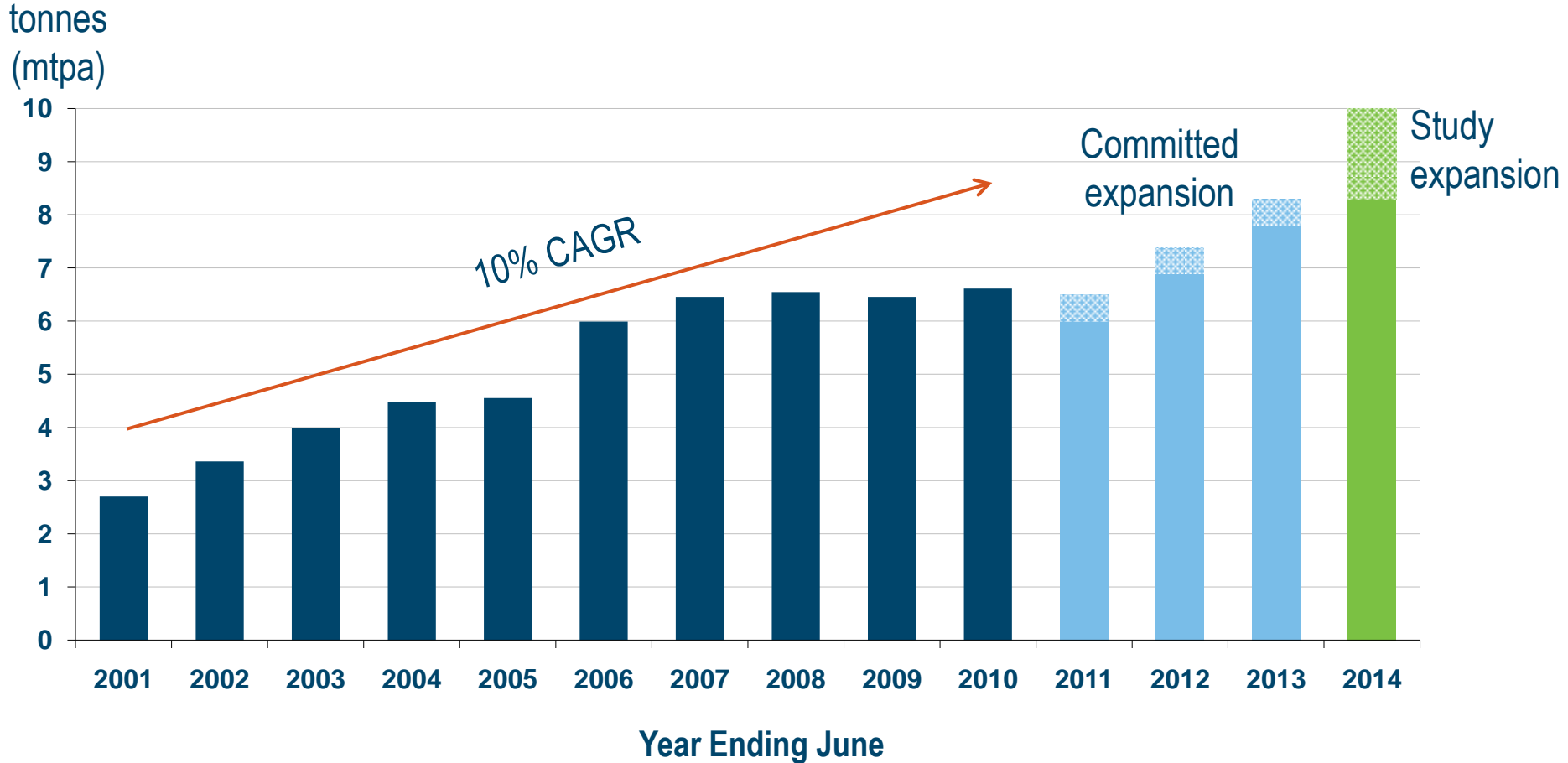
Global Metallurgical Coal – Export Projections



Asian Metallurgical Coal - Import Projections



Curragh metallurgical sales growth



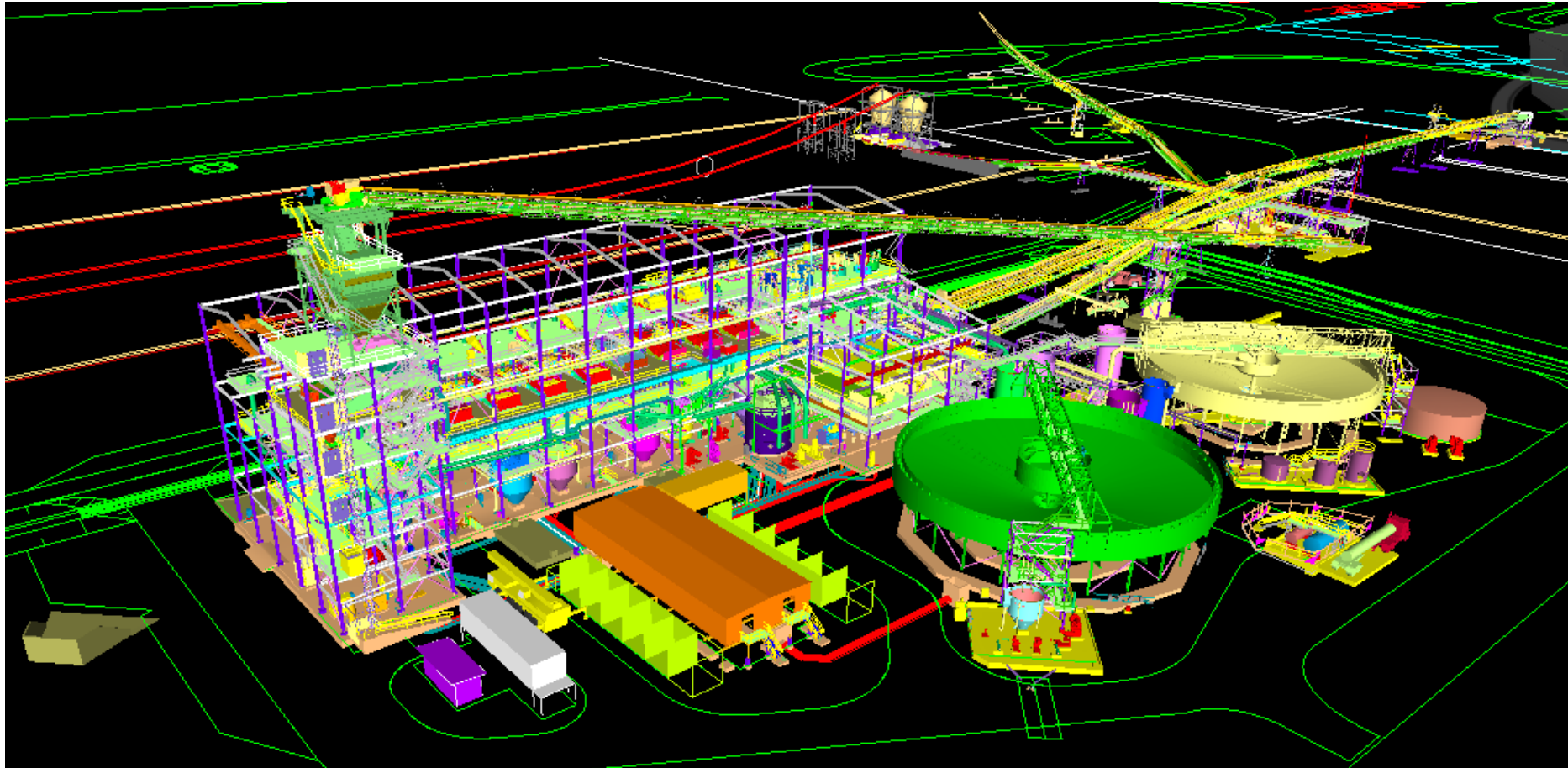


Curragh expansion update

Stewart Butel

Managing Director

Curragh mine expansion

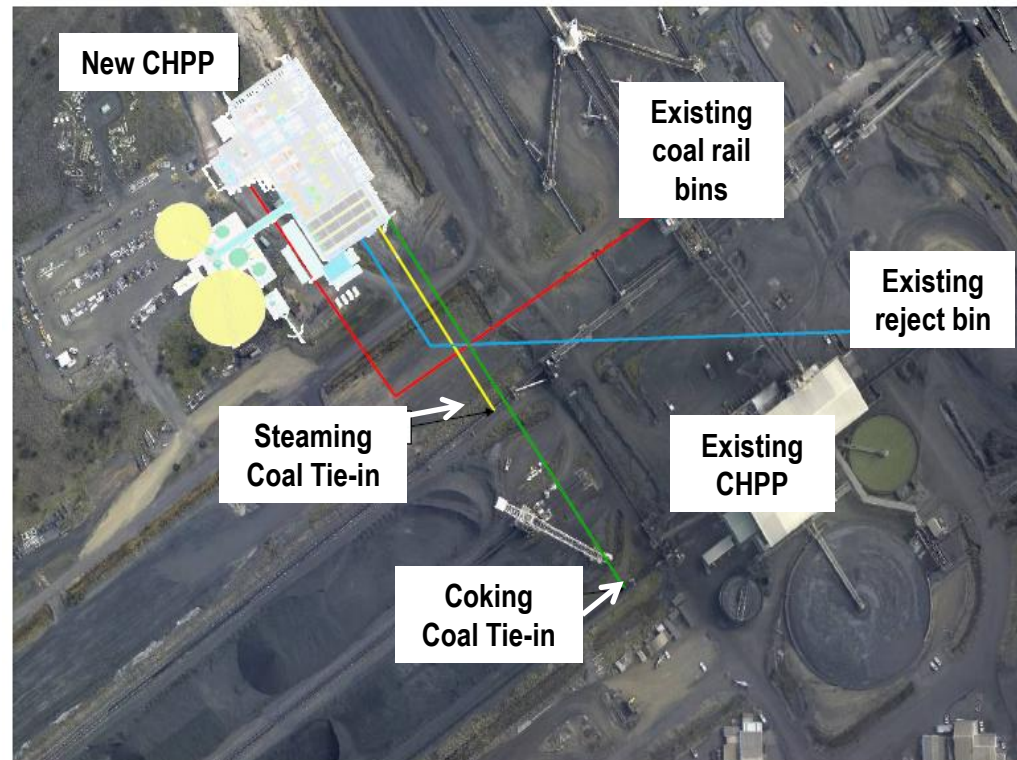


Curragh mine expansion (continued)

- Expand metallurgical coal exports to 8.0mtpa - 8.5mtpa
- Approved capital expenditure of \$286 million
- Export rail & port capacity contracted
- Expansion tonnage sales contracts in place
- Construction underway
- Two week shutdown of existing Coal Handling Preparation Plant to tie in new plant early 2011
- Expansion completion Q4 CY11

New coal preparation plant

- Design & construct contract awarded via competitive tender
- 1,200tph nominal capacity
- Located adjacent to existing CPP
- Existing CPP (25 years old) to be de-rated
- Ample capacity to produce 8.0mtpa to 8.5mtpa metallurgical coal
- Product sales mix unchanged
- Construction underway





New CHPP construction – 25 October 2010



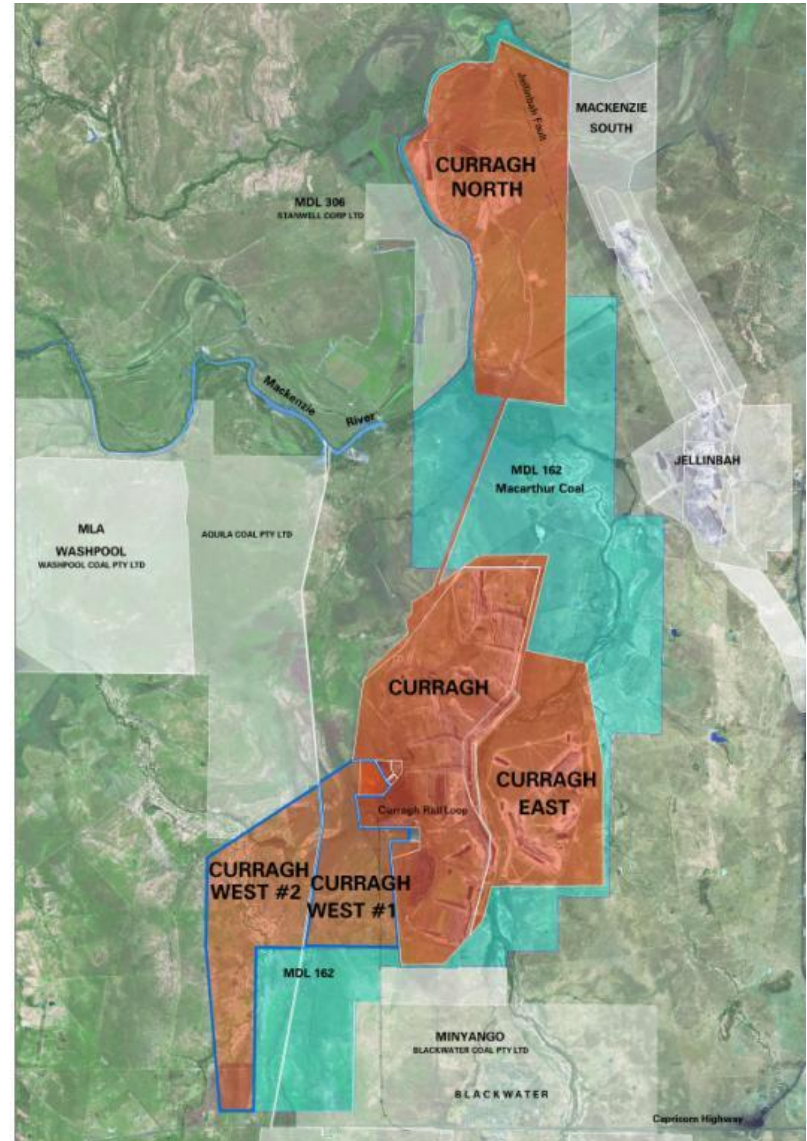
Blackwater Creek diversion

- Access to additional metallurgical coal
- Civil works completed September 2009
- Practical completion achieved December 2009
- Capital expenditure \$120 million
- Project completed ahead of budget & timeline



Curragh expansion study to 10mtpa exports

- Feasibility study ('FS') commenced
 - Mining & Coal Handling Preparation Plant studies
- Potential to expand Curragh to 10mtpa metallurgical exports from FY14
 - Wiggins Island commissioning
 - Additional rail capacity required
 - Potential for additional dragline
- Re-evaluation of remaining reserves at Curragh/Curragh East
- Evaluate Curragh West deposit
- Target exploration completion in Q2 CY11
- FS completion Q4 CY11



Wiggins Island coal export terminal

- Stage 1 – 27mtpa
- Financial close first half CY2011
- First shipment 2014
- Curragh is a Stage 1 participant
- Cumulative capacity with Stage 2 & 3 – 80mtpa

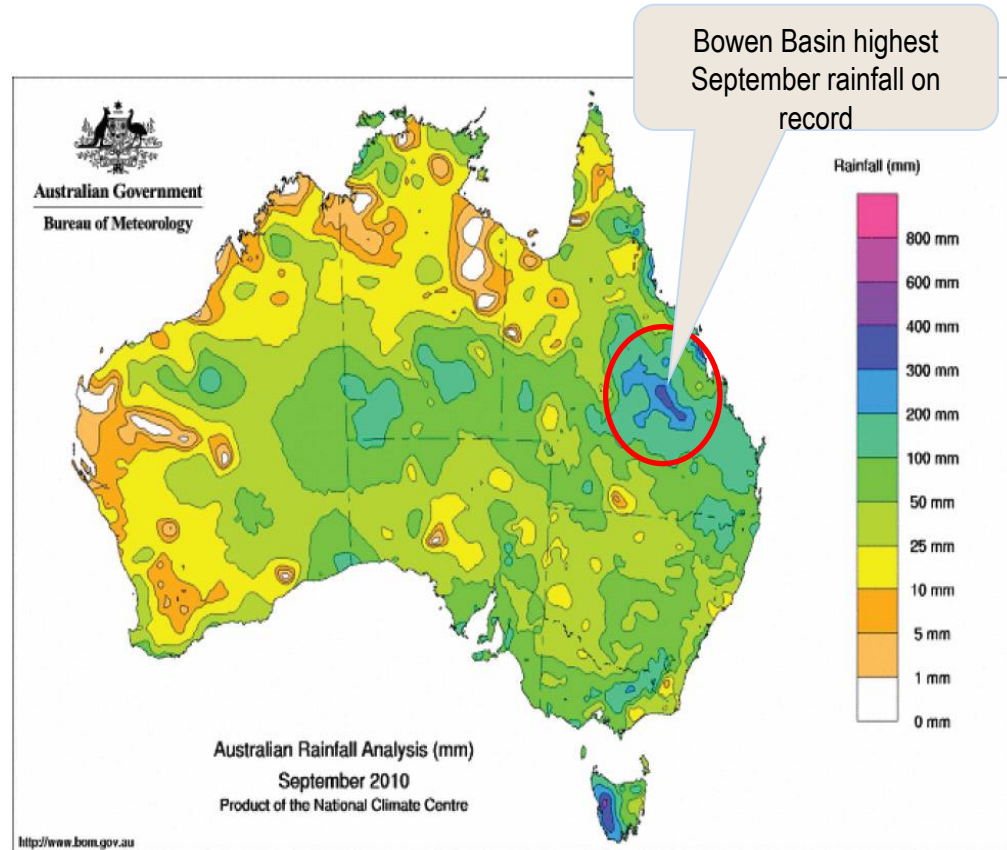




Outlook
Stewart Butel
Managing Director

September rainfall – impact on production

- Record September rainfall in Central Queensland
- Southern Bowen Basin mines affected
- Impact on Curragh's Q1 FY11 production
- Cost per tonne affected by lost production in H1 FY11
- Forecast Curragh metallurgical sales 6.2 – 6.7mt for FY11
- Financial impact on H1 FY11 results approximately negative \$80 - \$100 million EBIT
- Risk of further wet weather over summer period



Continued focus on cost control

- Re-emergence of tight labour market & industry cost pressures
 - Higher staff turnover
 - Contractors, parts, consumables, utilities
 - State royalty
- Impact of wet weather on Q1 coal production & costs
 - Lost production due to wet weather & extended Dragline 304 shutdown
 - Limited ability to catch up due to present CHPP capacity ahead of expansion
 - Additional truck & shovel required to meet revised forecast
 - Increased coal rehandle at ROM stockpile
 - Weather proof haul roads & ramps
- Ramp up of coal exposure ahead of expansion
- Cost reduction programs in place

Current hedging profile – as at 1 Nov 2010

Curragh			Bengalla		
Year end 30 Jun	Current US\$ sold forward (US\$m)	Average A\$ / US\$ hedge rate	Year end 30 Jun	Current US\$ sold forward (US\$m)	Average A\$ / US\$ hedge rate
2011**	497	0.85	2011**	76	0.82
2012	546	0.83	2012	82	0.80
2013	407	0.80	2013	61	0.79
2014	200	0.77	2014	39	0.76
2015	96	0.74	2015	24	0.73

+ US\$295.3m of contracts at average hedge rate of 0.82 delivered for the period 1 July 2010 – 31 October 2010

* outstanding contracts for remainder of year only ie: 1 Nov 2010 – 30 June 2011

+ US\$41.6m of contracts at average hedge rate of 0.82 delivered for the period 1 July 2010 – 31 October 2010

* outstanding contracts for remainder of year only ie: 1 Nov 2010 – 30 June 2011

Resources outlook

- Q2FY11 pricing negotiations completed – 11% decrease on Q1FY11
- Strong shipping performance from our traditional customers
- Continuing focus on cost control
- Strong Australian dollar
- Impact of wet weather on H1 FY11 results approximately negative \$80 - \$100 million EBIT
- Stanwell royalty estimate A\$135 - \$145 million for FY11 assuming A\$:US\$ of \$0.93
- Premier sole supplier to Verve Energy from 1 July 2010
 - Lower deliveries over last four months (-370kt) due to Verve stock reduction
- Bengalla expansion study nearing completion



For further information

Alex Willcocks

Manager Investor Relations & Planning

Wesfarmers Limited

T: +61 8 9327 4323

E: ir@wesfarmers.com.au

Stewart Butel

Managing Director

Wesfarmers Resources

T: +61 7 3031 7794



www.wesresources.com.au