

# Curragh

# Curragh Mine Tour

10 September 2004

Murray Bailey  
General Manager  
Curragh Qld Mining Pty Ltd



Wesfarmers

# Curragh Mine Today

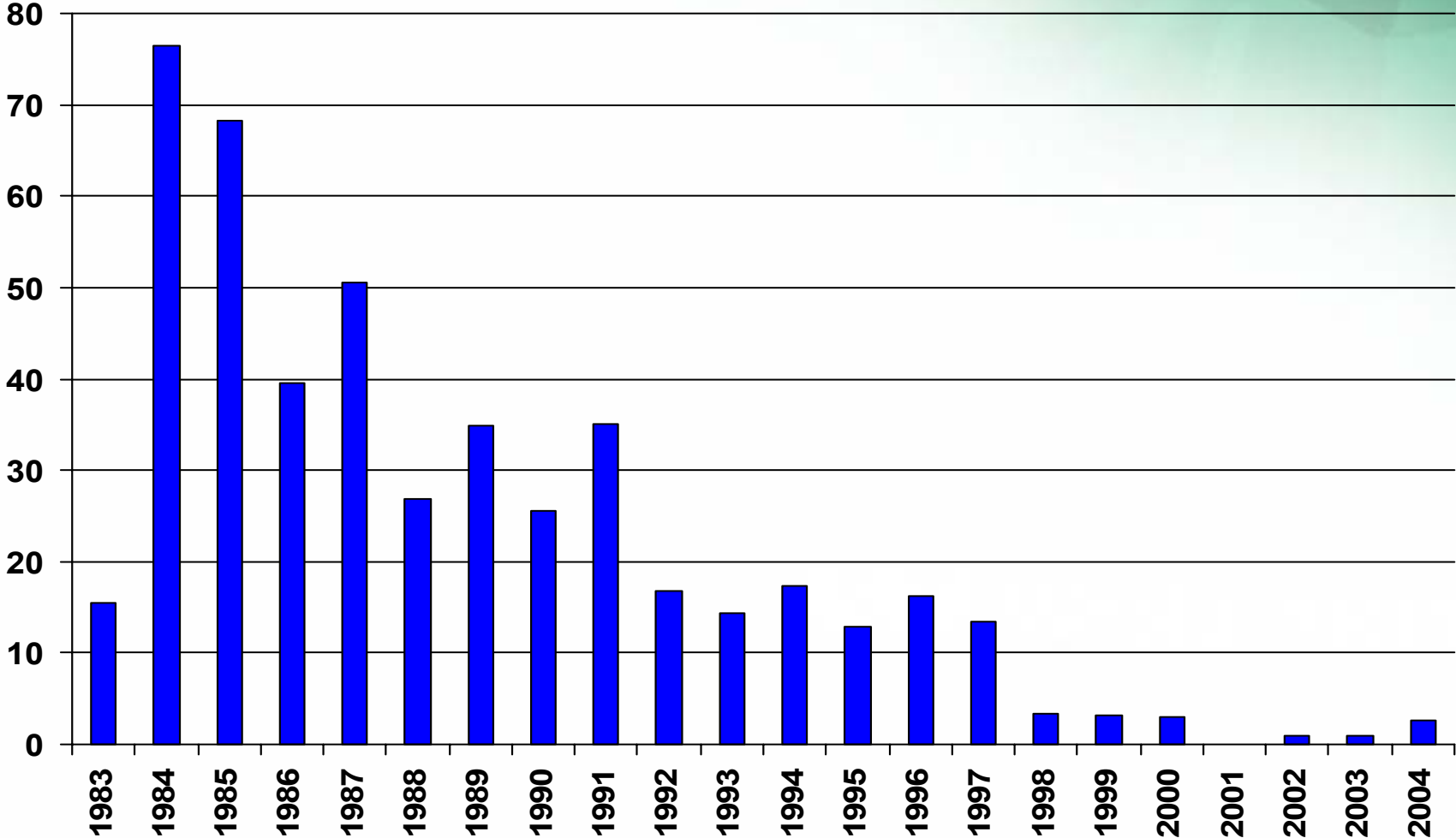
- Substantial reserves – 94 million tonnes
- Low-ash, low volatile, hard coking coal
- 4.6 million tonnes exported annually
- Steam coal railed to domestic Power Stations
- 4 coal seams—Aries, Castor, Pollux and Pisces
- 280 Curragh employees
- 200+ contract employees

# Summary of Operation

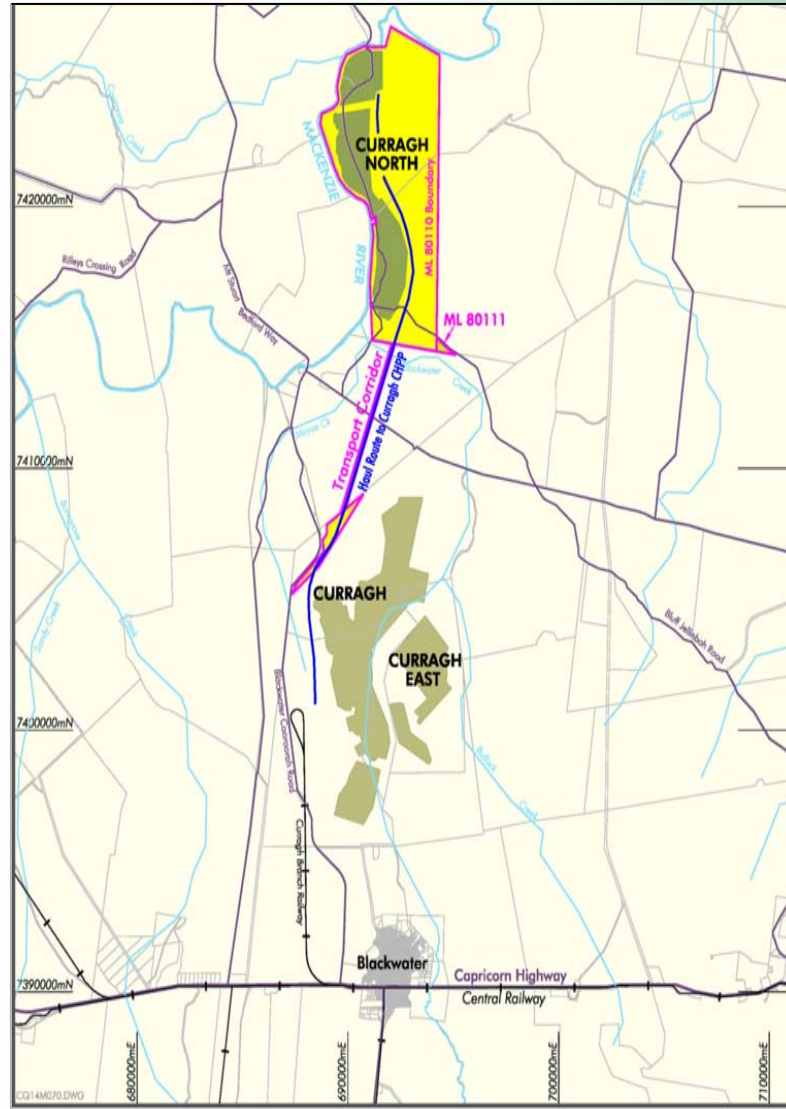
- Multi-seam with 16km strike length
- Multiple large walking draglines
- Support fleet of mobile mining equipment
- Experienced personnel
- Contractor usage
- Two stage coal washing Multi product mine
- Export through Gladstone Port

# Safety - a "Core Value"

## Lost Time Injury Frequency Rate



# Area Geography



Curragh – part of Wesfarmers Energy



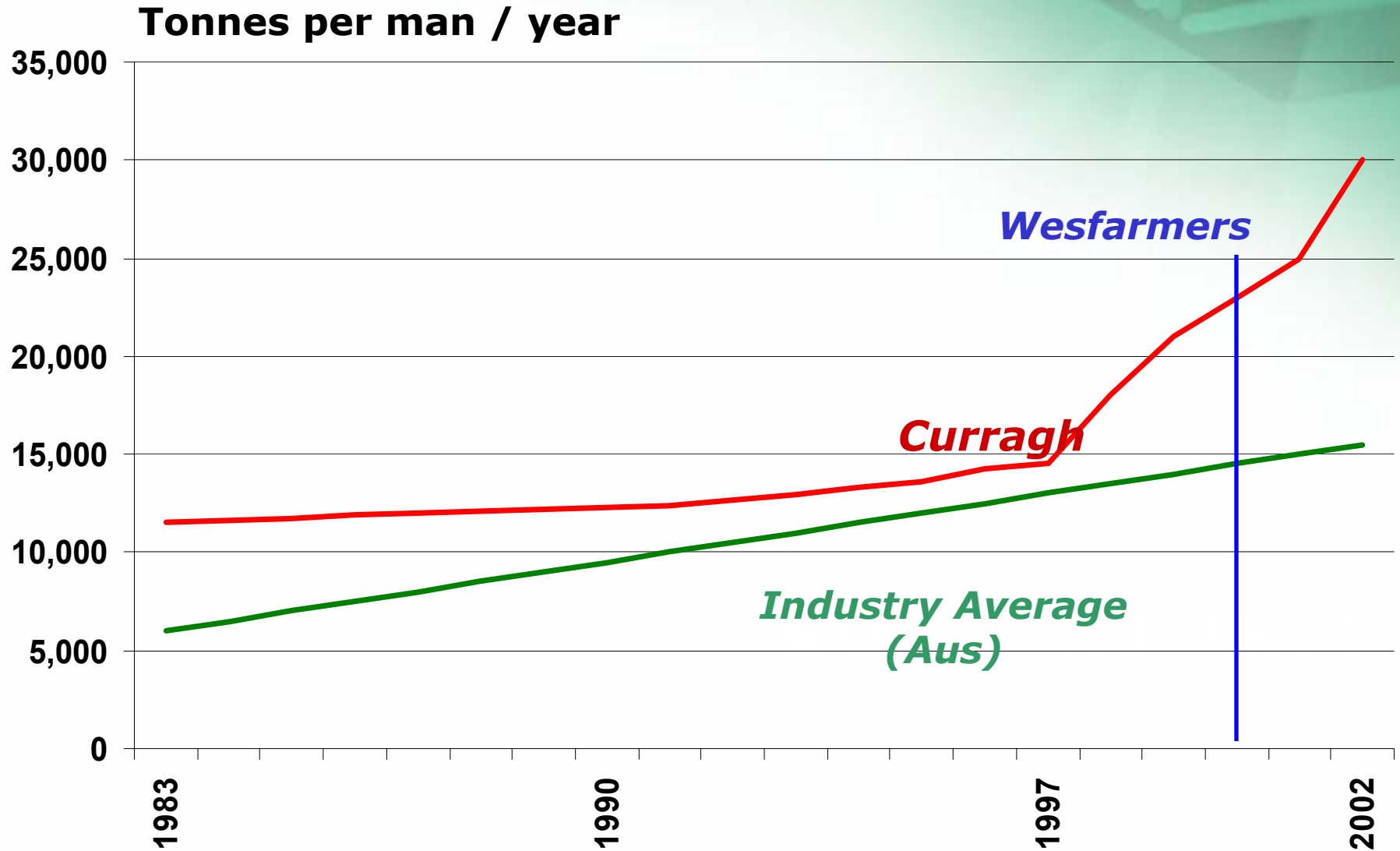
# Major Stripping Unit - Dragline



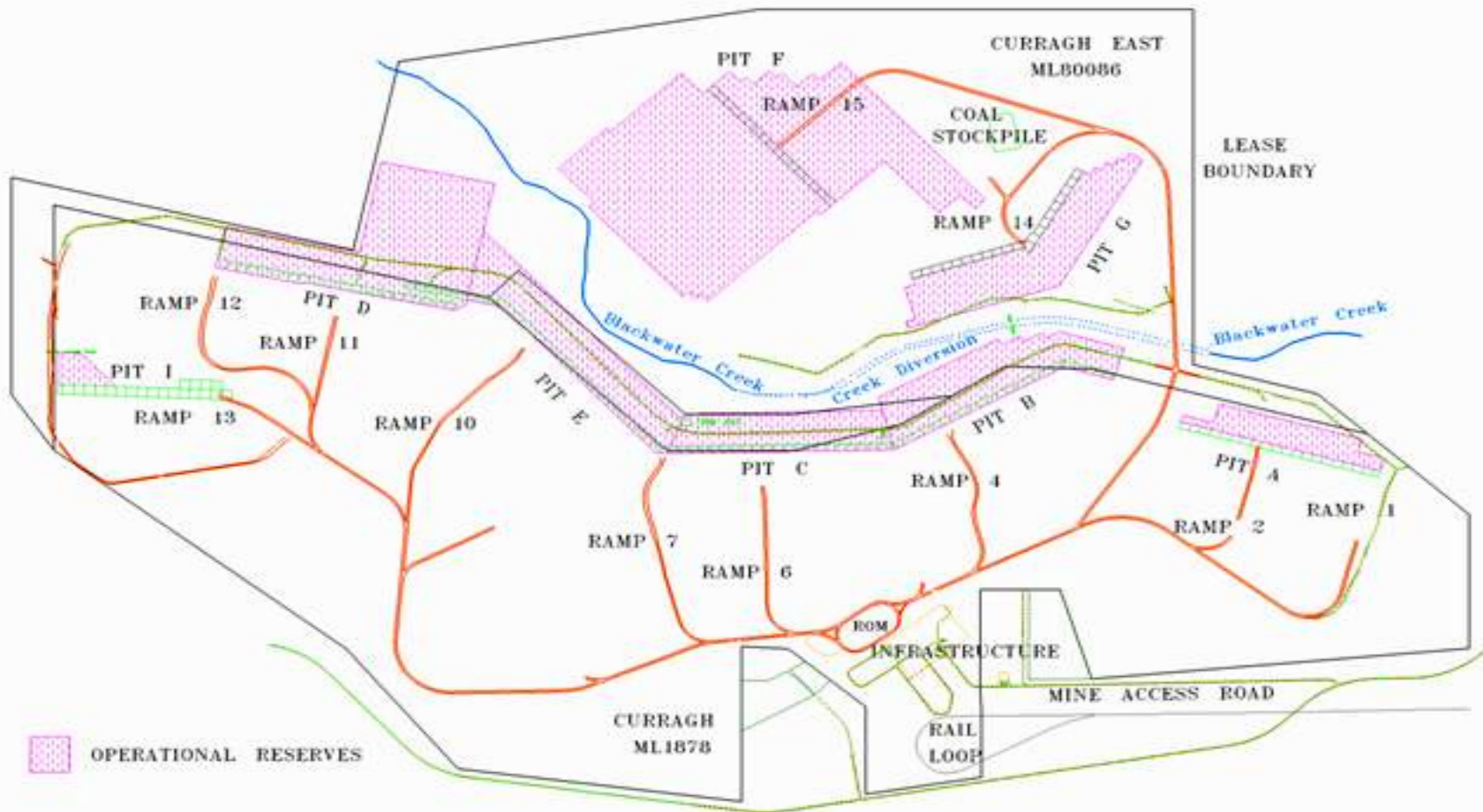
Curragh – part of Wesfarmers Energy

**URRAGH**

# Curragh Productivity



# Curragh Mine Plan





# Coal Mining at Curragh



Curragh – part of Wesfarmers Energy

**URRAGH**

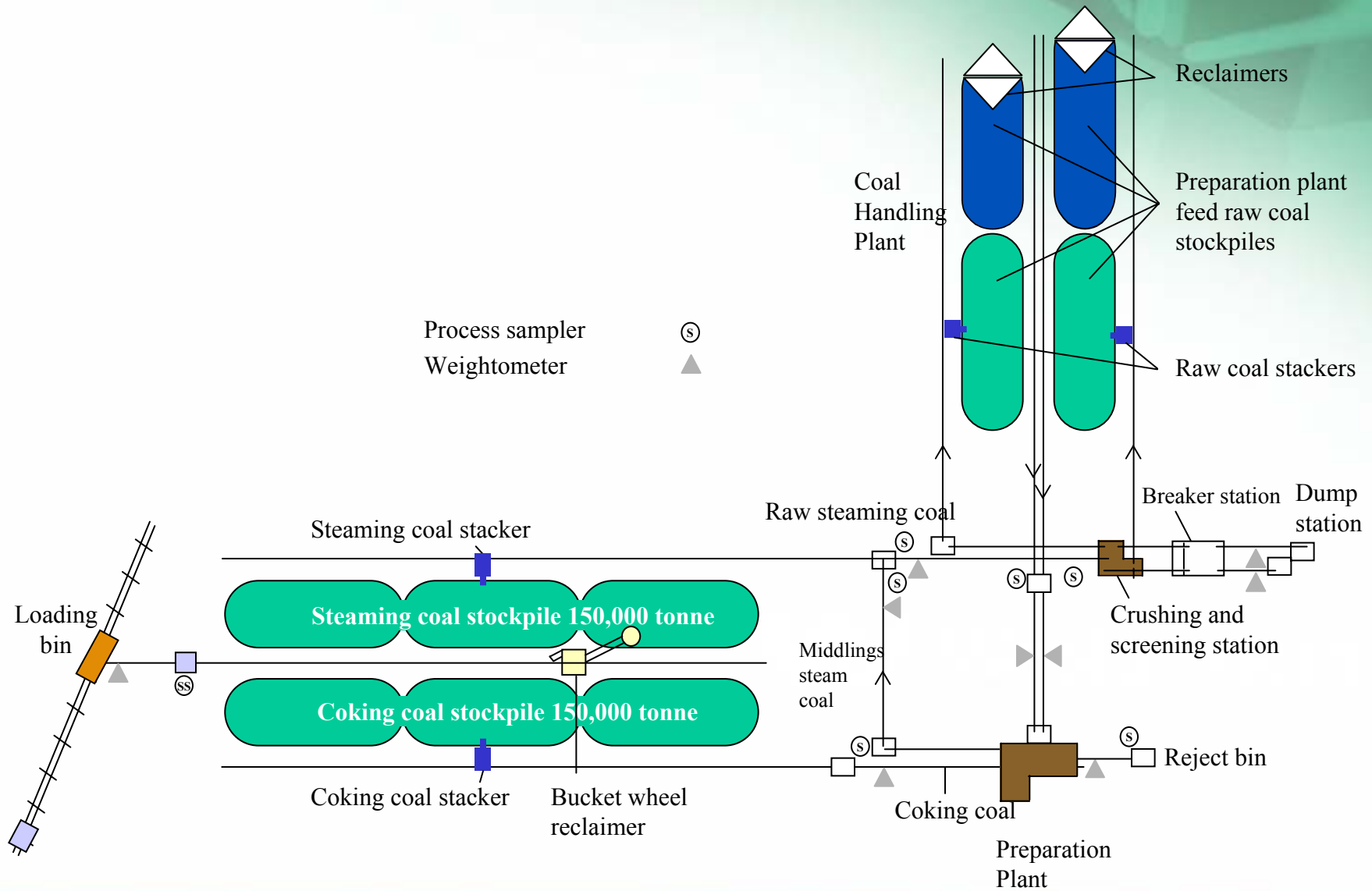
# Coal Handling & Preparation Plant



**Curragh – part of Wesfarmers Energy**

**URRAGH**

# CHPP Schematic



# Gladstone Port



**Curragh – part of Wesfarmers Energy**

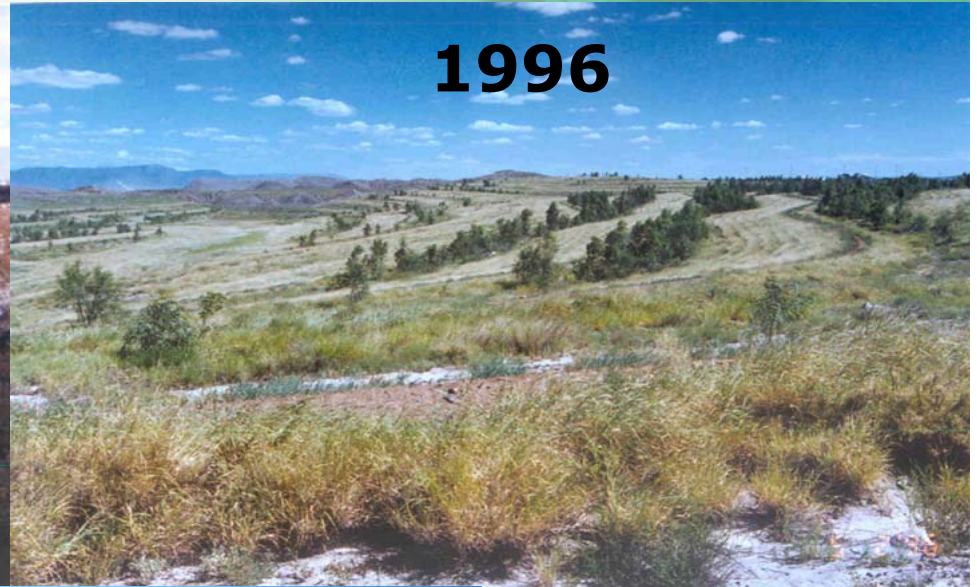


# Environmental Completed Rehabilitation

1992



1996



2000



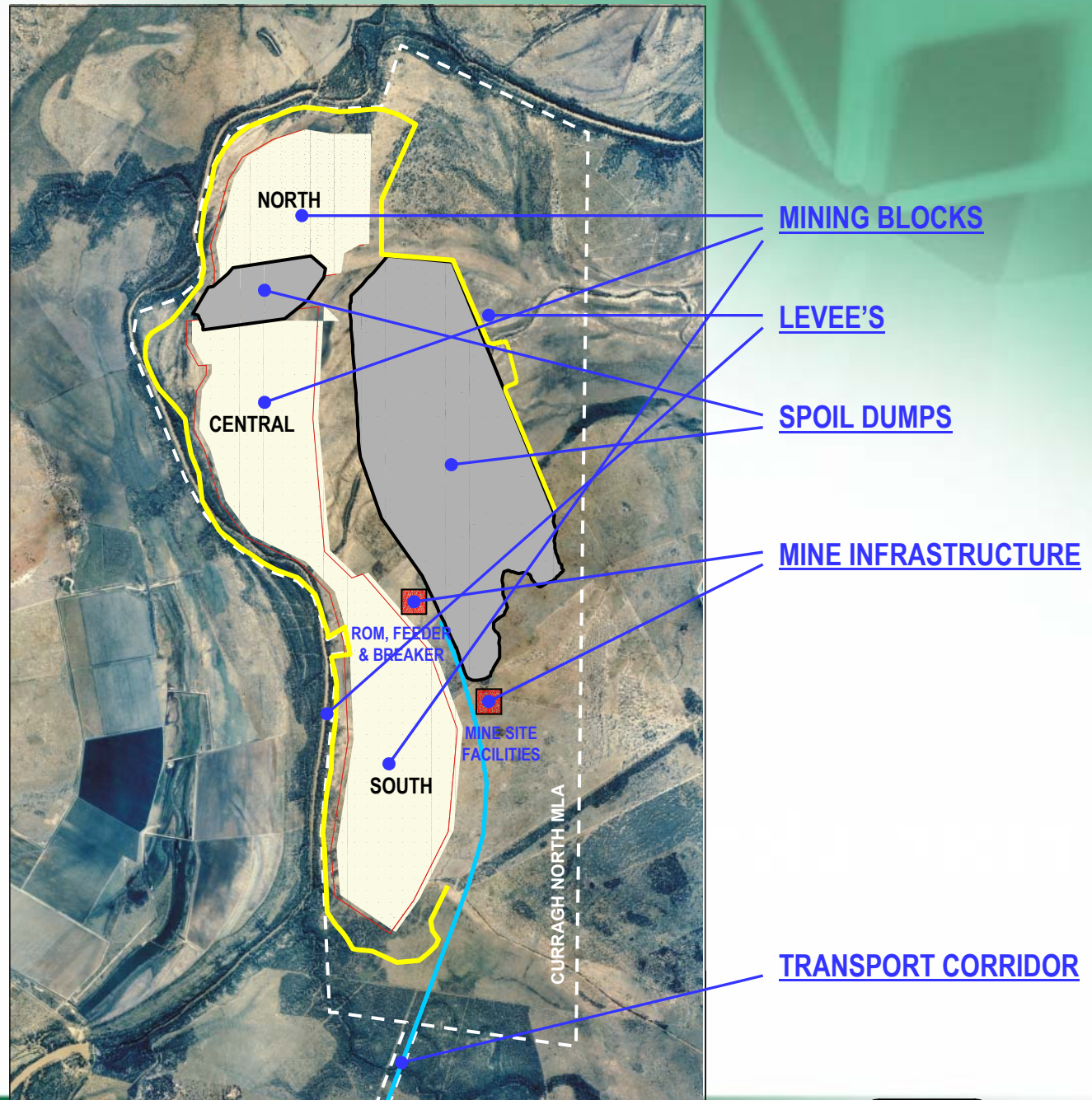
# Curragh North Resource

- Curragh lease to Curragh North lease = 7 km
- Deposit – 132 MT within mine plan area
- Aries, Castor and Pisces seams
- Thermal and export metallurgical coal
- Coal transportation distance 22 km

# Curragh North – Development and Mining

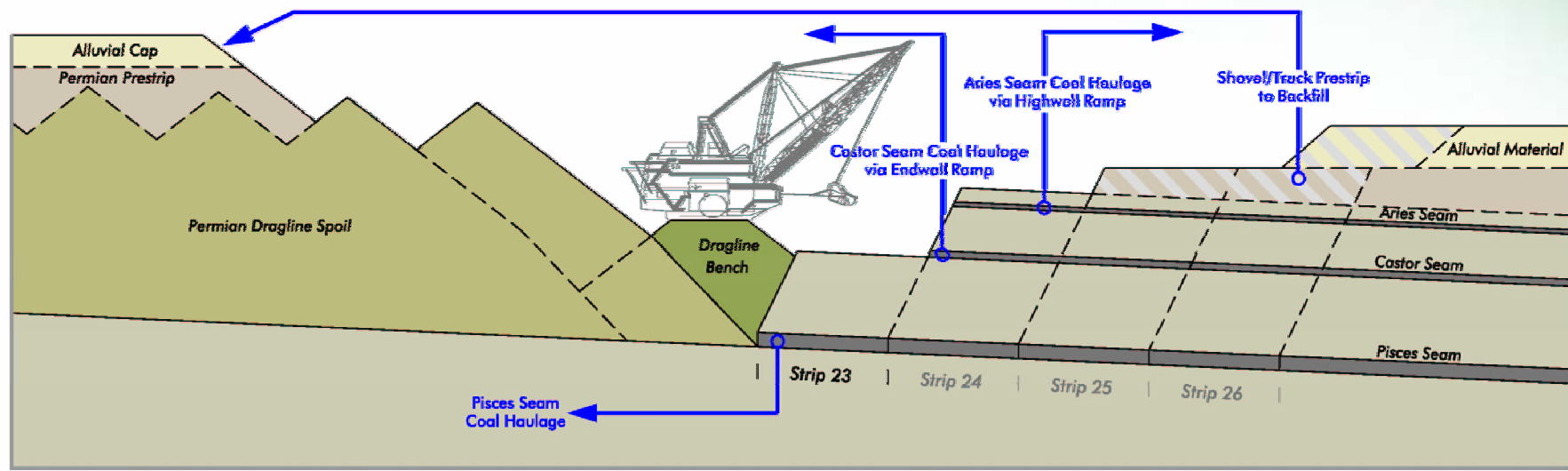
- 3 pits - North, Central and South
- Mine Lease area 4,800 ha
- Disturbed area 3,000 ha
- Mining to commence at western edge
- 2 draglines from Curragh for overburden removal
- Truck and shovel pre-strip
- Coal conveyed to Curragh for processing and rail

# Curragh North Mine Plan





# Mining Methodology



# Mining at Curragh North

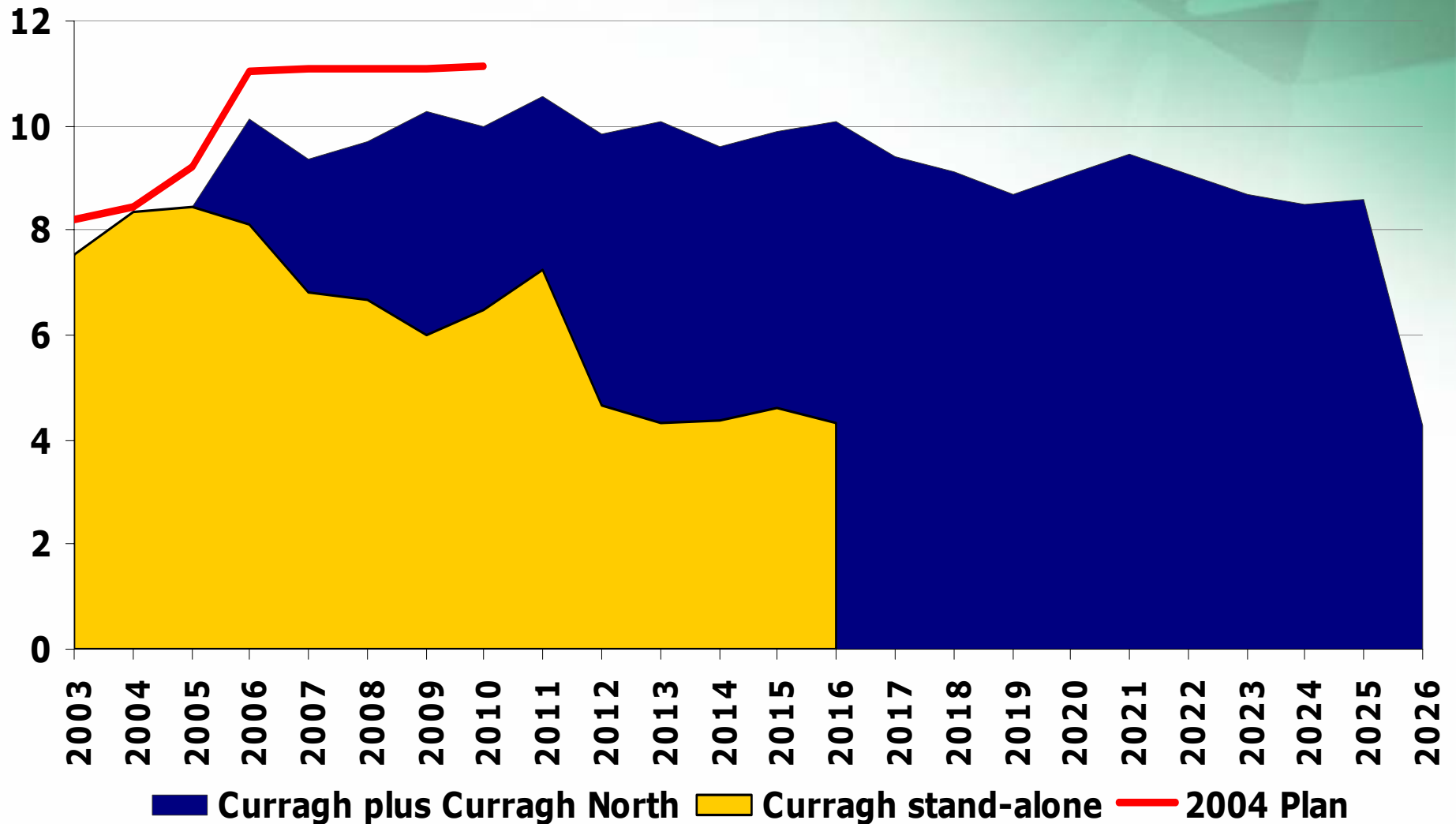
- Contractor boxcut and pre-strip for first 4 to 5 years
- Curragh-owned excavators and haulers to mine coal
- Conveyor transport of coal to Curragh
- Existing Curragh infrastructure utilised for:
  - Coal handling and crushing
  - Coal processing
  - Stockpiling
  - Rail load-out
- Dragline relocations to CN in 2006 and 2007

# Curragh North ROM Coal Transport

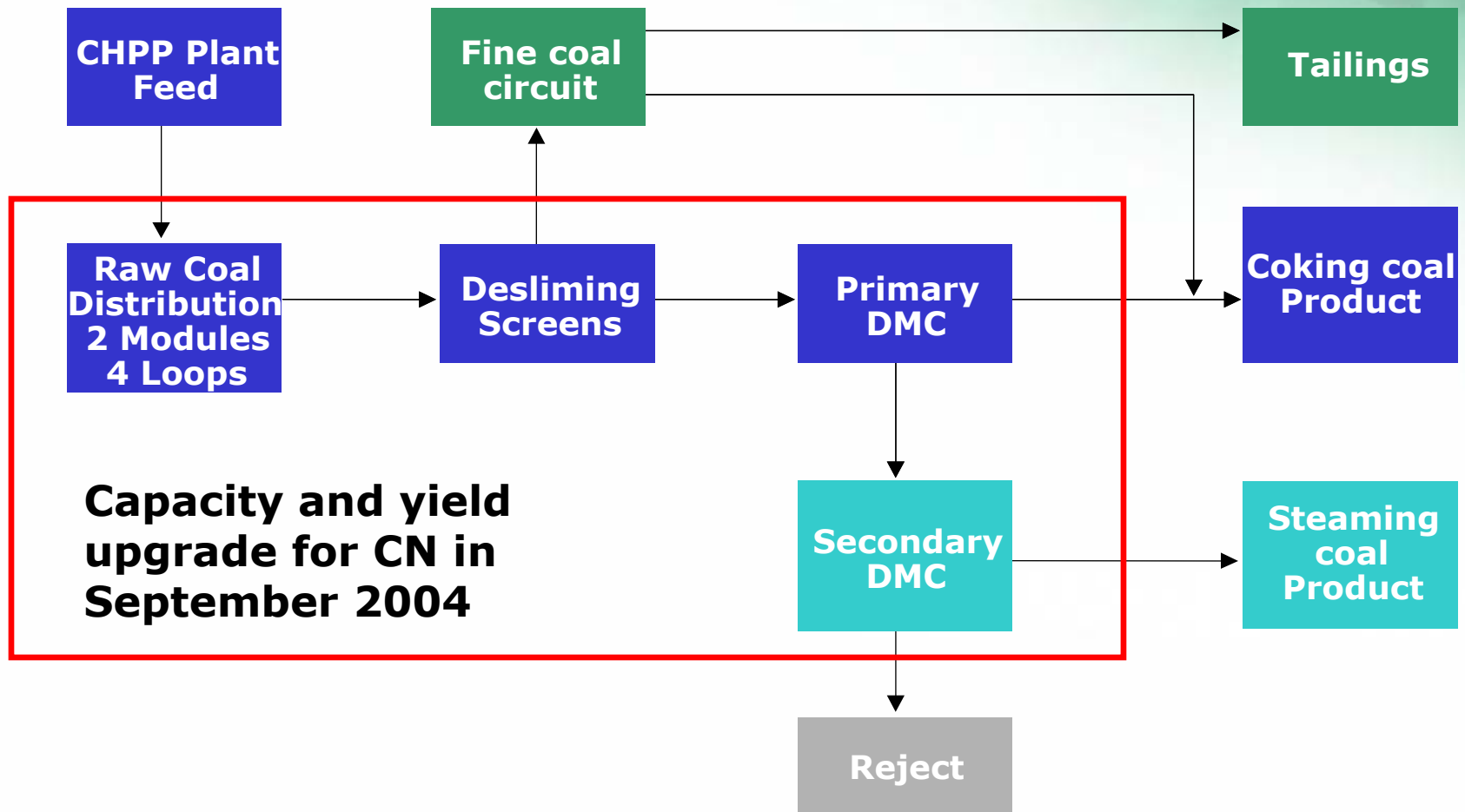
- Options considered:
  - Contractor road train
  - Unitised coal haulers
  - Conveyor
- Conveyor benefits:
  - Avoids extensive upgrade of existing handling system
  - Lowest NPC and cash operating costs
  - Lowest HSE operating risk
  - Sized for future growth

# Curragh Production

ROM - mtpa



# Coal Processing



# Curragh North Capital Cost

- Total Cost \$290m
- Major elements:
  - Compensation
  - CHPP upgrade
  - Civil Infrastructure
  - Mobile equipment
  - Conveyor & coal handling

# Curragh's Competitive Attributes

- Safety
- Workforce Skills and Flexibility
- Environmental
- Selection and Use of Technologies
- Mining, Coal Processing, Maintenance and Risk Management Capability
- Management, Marketing and Sales Expertise

[www.wesfarmers.com.au](http://www.wesfarmers.com.au)



Wesfarmers